

THE GEORGE R. BROWN CONVENTION CENTER (GRB)

SAGE INCLUSION ASSESSMENT REPORT



Prepared
JANUARY 2025



Table of Contents

<u>Introduction</u>	<u>3</u>
<u>The Basis for Sage Anaysis</u>	<u>4</u>
<u>The George R. Brown Convention Center Accessibility Characteristics Overview</u>	<u>5-7</u>
<u>The George R. Brown Convention Center Accessible Zones: Descriptions and Key Features</u>	<u>8-16</u>
<u>Contact</u>	<u>17</u>

Introduction

The George R. Brown Convention Center (GRB), located at 1001 Avenida de las Americas in the heart of Houston's downtown district, is a premier venue for events, offering a thoughtfully designed space that prioritizes accessibility. Spanning over 1.2 million square feet of usable space, the GRB ensures that all visitors, including those with disabilities, can navigate and enjoy the facility with ease and comfort.

Accessibility begins with the entrance, which is designed to be wide, barrier-free, and easily navigable for individuals using mobility aids. The floors and surfaces throughout the convention center are stable, firm, and slip-resistant, ensuring safety for all guests. Elevators are strategically located, providing access to all levels and key areas of the venue, including meeting rooms, ballrooms, and exhibition halls.

Accessible bathrooms restrooms are provided, featuring grab bars, spacious layouts, and additional features to accommodate individuals with limited mobility. Internal routes are step-free and designed with clear signage, making navigation simple and efficient. Meeting rooms and event spaces are designed to be inclusive, with ample space for maneuvering and accessibility features integrated into their layouts.

The George R. Brown Convention Center demonstrates a strong commitment to inclusivity, ensuring that every guest can fully participate in events, conferences, and gatherings held within its versatile and thoughtfully designed spaces.

The Basis for Sage Analysis

Analysis Based on Multiple Accessibility Standards:

- Americans with Disabilities Act (ADA) Standards
- ISO 21902:2021 Tourism and related services – Accessible tourism for all – Requirements and recommendations
- ISO 21542:2021 Building construction – Accessibility and usability of the built environment
- Sage Best Practices based on 200,000+ hours of accessible trip planning experience



Our accessibility assessment is comprehensive.

The Analysis Covers the Five Main Disability Categories

- Mobility including wheelchair users, mobility scooter users, and slow walkers
- Vision including blind and low vision
- Hearing including deaf and hard of hearing
- Mental including cognitive and sensory
- Allergy and dietary



The George R. Brown Convention Center (GRB) Accessibility Characteristics Overview



*Assessment conducted by John Sage
December 2024*

Mobility:

- Available accessible parking spaces with sufficient width and length
- Accessible parking pay stations
- Barrier-free entrance
- Wide doorways
- Stable, firm and slip-resistant floor surfaces
- Smooth transition between different floor surfaces
- Accessible elevator with sufficient maneuvering space inside
- Plenty of room for maneuvering in a wheelchair/scooter
- Swinging doors with sufficient width and no threshold
- The doors designed to require minimal force to open
- No obstructions along the circulation routes
- Tables of suitable height and sufficient knee and toe clearance
- Accessible toilet compartment with fixed horizontal grab bars
- Comfortable toilet height for a transfer from a wheelchair/scooter
- Sufficient clear floor space beside the toilet seat that can be used for transferring from a wheelchair / scooter
- Urinals available at varying heights

- The sink is positioned at a comfortable height, with a convenient reaching distance from the front to the operable part of the faucet.
- Water fountains accessible for people in a seated position

Visual:

- The AIRA application for visually impaired customers available for downloading on the website
- Interactive map of the facility provided on the website
- Availability of clearly positioned and well illuminated signs contrasted with their surroundings
- The characters on floor designation signs are raised and duplicated in Braille
- The car control buttons are raised and duplicated in Braille
- Floor surface is slip-resistant and does not produce glare
- Sufficient lighting to facilitate awareness of changes in level or slope
- Circulation paths without obstructions, protrusions and openings
- Furniture surfaces free of abrasions and sharp edges

Hearing:

- Acoustic environment corresponds to the purpose of the venue
- Lighting in most areas is sufficient to facilitate lip reading

Cognitive:

- Clear and simple signage
- Non-glare, non-reflective floor, walls and furniture surfaces
- No flickering lights within the site
- The noise level allows for comfortable communication

Allergy:

- Fragrance free products used for cleaning
- Ventilation and air conditioning systems operate properly
- Smoke - free indoor area
- F&B staff trained to handle allergies and respond to allergic reactions

The George R. Brown Convention Center (GRB) Accessible Zones: Descriptions and Key Features

Parking and External Routes



- The pathways are wide with a minimum clear width of more than 36 inches along the path of travel
- The ground surface is stable, firm, and remains slip-resistant in both wet and dry conditions
- The doorways along the path are wide and feature no thresholds





- Accessible parking spaces clearly indicated with an International Symbol of Accessibility



- Accessible parking spaces are connected with the entrance with an elevator



- There are two pay stations available, each set at different heights to accommodate a range of users.

Entrance and internal routes



- The entrance doors visually contrast with surroundings



- The double doorways provide sufficient width for guests using mobility aids



- The door threshold height is minimized with a large transition plate, creating a nearly flat entry



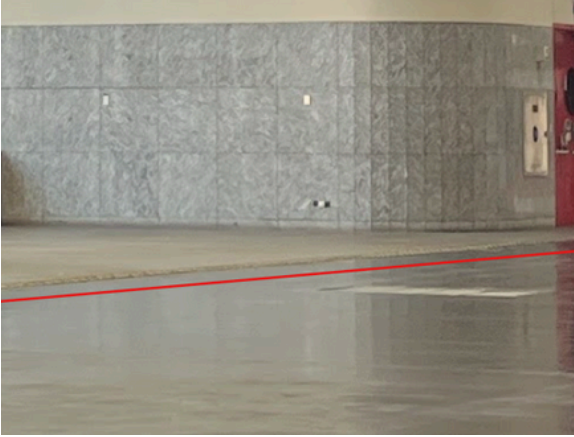
- The convention center is connected to the hotel with an internal accessible path that features sufficient width, firm, stable and slip-resistant surface and clear contrasted signage



- The drinking fountain is accessible both from seated and standing position
- The clear floor space in front of the drinking fountain exceed 60 * 60 inches



- The walkways of internal circulation paths provide a clear width of at least 60 inches, allowing sufficient space for turning
- The floor surface is stable, firm, and slip-resistant



- The transitions between different floor surfaces are level and free of abrupt changes in height

Elevator



- The elevator call buttons and landing area are unobstructed, ensuring clear access
- The height from the floor to the highest elevator call button is 41 inches
- Floor designation signs include tactile characters (raised and Braille) positioned 60 inches above the floor
- The elevator doorway provides a clear width of 42 inches



- The elevator door stays open for 5 seconds and has a reopening sensor that detects when someone is in the doorway

- The elevator car dimensions are 80 * 61 inches

- The elevator car buttons located at a height of maximum 41 inches, are raised for easier identification by touch and supplemented with Braille)

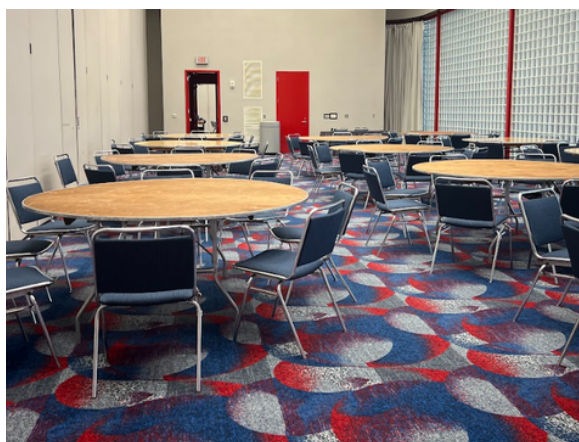
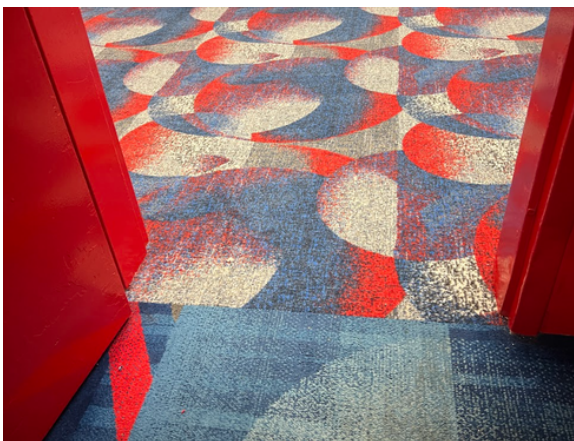
- Alarm and help buttons are distinguished with special symbols for easy recognition

- The elevator car is equipped with a fixed handrail for additional support

- The floor surface inside the elevator car is stable, firm, and slip-resistant



Meeting room



- The meeting room is equipped with a swinging door without a threshold that contrasts with the surrounding walls and provides a clear width of 33 inches
- The door requires 18.1 N of force to open, ensuring ease of use
- The floor surface of the meeting room is stable, firm, and slip-resistant, and does not produce glare
- The tables have a matte or low-sheen surface, avoiding excessive gloss or shine, from sharp edges or protruding elements
- Tables are 30 inches high, with a knee and toe clearance of 29 inches in height, 32 inches in depth, and 32 inches in width, ensuring accessibility for individuals with mobility impairments

Public Bathroom



- The accessible bathroom is marked with the International Symbol of Accessibility
- The door to the accessible restroom is a swinging door type 35 inches wide without a threshold
- The floor surface is stable, firm, and slip-resistant and it does not produce glare
- The sink counter is positioned at a height of 34 inches from the floor to the top and 30 inches from the floor to the bottom.
- The pipes under the sink are insulated and protected to prevent contact
- The reaching distance from the front of the sink to the operable part of the faucet is 11 inches and 19 inches to the soap
- The water controls are automatic

Public Bathroom



- The toilet is equipped with fixed horizontal grab bars on the rear and side walls
- The toilet seat is at a convenient height of 18 inches
- The distance from the nearest side wall to the centerline of the toilet is 19 inches
- The clear floor space beside the toilet seat, designated for wheelchair or scooter transfers, is 34 inches wide
- The urinals are installed at two heights, 16 inches and 24 inches, with a clear floor space of over 60 by 60 inches in front of each



Contact:

THIS REPORT HAS BEEN PREPARED BY

SAGE INCLUSION



435 Hunters Creek Drive New Braunfels, TX 78132 USA



1-888-313-6606



info@sageinclusion.com



www.sageinclusion.com